

## ***Global Quality*** **Technicians Making the U.S.** ***First in Global Manufacturing***

- An Education/Industry Partnership – an industry-led “co-owner” program.
- Re-defines the Customer Relationship of education (for this program):  
Old Model: *The Student is the No. 1 Customer*  
New Model: *The Employer is the No. 1 Customer*  
*Practical Effect: Results in a better education program and a near 1-to-1 employment ratio.*
- Not a “technical college” - a “Manufacturing Magnet” college with the goal of preparing globally competitive technicians that will support the success of U.S. manufacturing against our strongest international competitors.
- Re-designs the learning environment. Transforms the place of learning to look/feel/function like the place of work (Classrooms are unrealistic).
- Emphasis is on the “Technician” (the person) and not the “Technology.”  
*But there’s still more technology in this program than in traditional programs.*
- Work/Study “virtual scholarship” program, closely coordinating activities.  
*Paid work covers educational expenses. Most students graduate debt-free.*
- Re-designs the curricular program:  
*Selective program, targeting best talent from the K-12 system.*  
*100% use of every learning minute (8 hrs/day, 5 days/week, 5 straight semesters).*  
*Every course pre-selected for maximum preparation for advanced manufacturing.*  
*Adds 5 extra-curricular semester-long modules to teach the DNA of manufacturing.*  
*Emphasizes verbal and written communication skills and key work behaviors.*  
*Proactively seeks to diversify the face of technology & engineering in manufacturing.*
- Industry-led coalition joins many employers together to sponsor students.
- Part of a larger career pathway program leading to additional education.

# The New Model School For Manufacturing

**MORE REALISTIC**  
Looks Like a Factory  
Feels Like a Factory

**MANUFACTURING SIMULATOR**  
Central Focus  
Reason for Learning  
Toyota Troubleshooting

**TOYOTA LEARNING**  
Safety, TPS, 5S  
Learning Lab

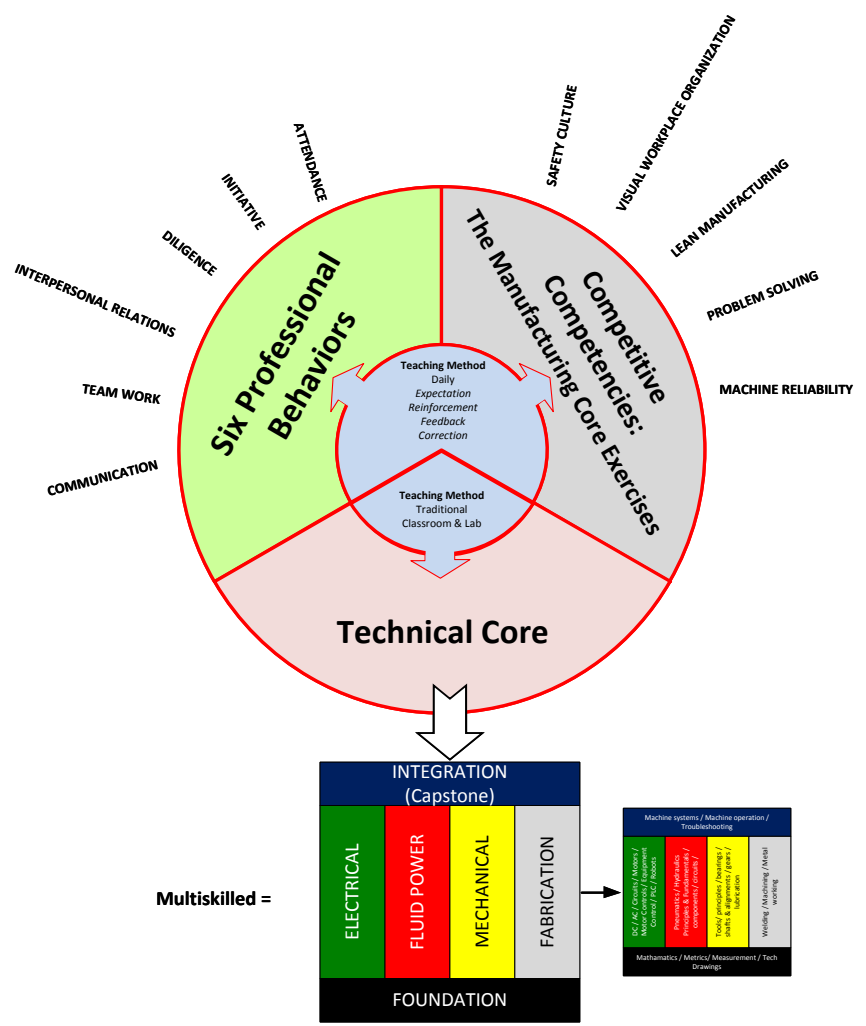
**ORGANIZED BY FUNDAMENTAL SKILL**  
Electricity / Fluid Power  
Mechanics & Fabrication

**PROCESS LEARNING**  
Students learn in a structure sequence

**Students Learn the Right Way the First Time**

**TMMK**

Each program establishes an open work emulation area known as the "Advanced Manufacturing Center." Learning occurs here and not in a classroom.



In other programs the core learning is the technology. AMT develops the whole worker: Technology, Professional Behaviors, and the Competitive Competencies. The focus is on the Technician (the person) and not just the technology.

# The Advanced Manufacturing Career Pathways

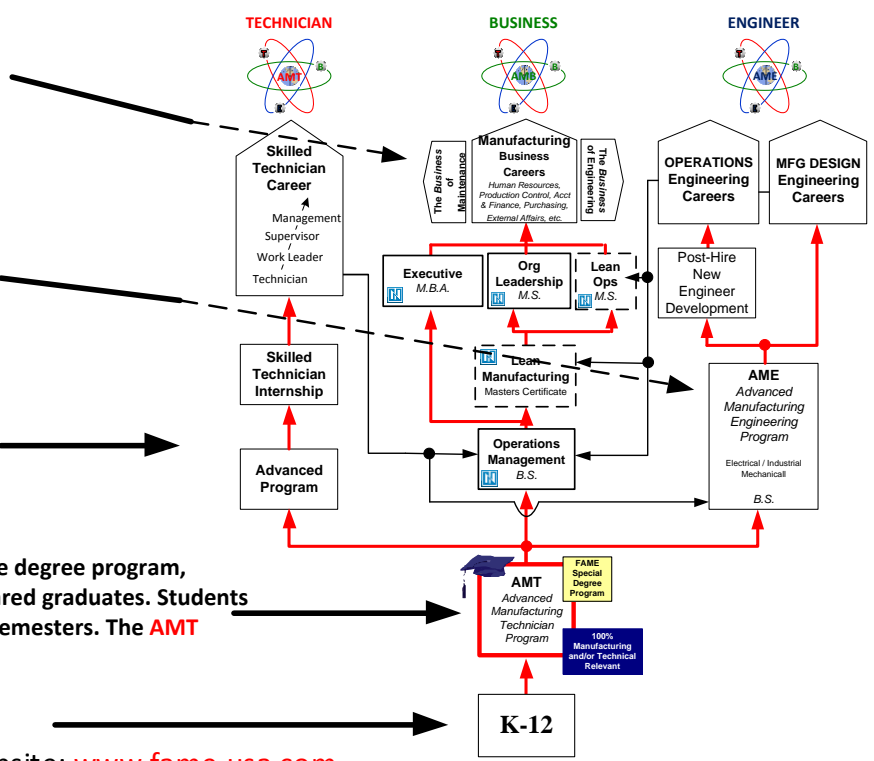
An employer designed business degree pathway that aims to be the strongest business-based manufacturing program in the U.S. allows all who desire to continue from associate to bachelors to masters degree. The **AMB Program**.

Some go directly to Engineering school after the AMT Program, in an enhanced program that produces the best-prepared manufacturing engineers. The **AME Program**.

Most continue to a technician career pathway in a high wage job with continued education and career growth and producing the best global technicians.

An entirely new kind of 2-year technical associate degree program, employer-led, produces remarkably better prepared graduates. Students are engaged 8 hrs/day, 5 days/week, 5-straight semesters. The **AMT Program**.

**Employers** encourage STEM interest in all grades and recruit from best practice programs at the high school level.



National Website: [www.fame-usa.com](http://www.fame-usa.com)  
 See a local website: [www.kyfame.com](http://www.kyfame.com)

